



Oregon  
Shakespeare  
Festival®



2025  
SEASON



2025

# MEMBER PRESALE ORDERING GUIDE

Much Ado About Nothing (2024); Cedric Lamar, Ava Mingo. Photo by Jenny Graham.



# WELCOME TO PRESALE 2025



“ Our 2025 season takes us into the forest, out to the frontier, and into our dreams, celebrating our freedom to live our truth and rediscover ourselves.

These nine productions in our 90th Anniversary Season brilliantly highlight the pivotal moments when we face life-changing decisions and the importance of listening to our hearts. ”

—TIM BOND, ARTISTIC DIRECTOR

## HOW TO ORDER DURING PRESALE

Here is your guide to ordering your 2025 tickets during Member Presale. See the chart below for the presale dates for your membership category.

**Order by web:** [osfashland.org](http://osfashland.org)

**Order by phone:** (800) 219-8161

**Web and phone orders** begin at 10:00 a.m. (Pacific Time) on the first day of your Presale Access period. See online and phone Presale Access tips to the right.

## GET YOUR MEMBER DISCOUNT!

Members (Sustainer and above) get **25% off** for performances March 7–June 12 and Sept. 23–Oct. 26 **when you order during Presale**. After that, enjoy **10% off** if you order by March 6, 2025. (Tickets purchased or exchanged after March 6, 2025, will be full price.)

## PRESALE START DATES BY MEMBERSHIP CATEGORY

Presale begins at 10:00 a.m. Pacific Time on the first day of your category and ends on Nov. 24. **Web sales only on Mondays.**

Nov. 7 (Thurs)	Artistic Director's Circle — \$25,000+
Nov. 8 (Fri)	Chautauqua Guild and Chautauqua Guild Circle — \$6,000–\$24,999
Nov. 12 (Tues)	Producer and Producers' Circle — \$1,250–\$5,999
Nov. 14 (Thurs)	Benefactor — \$600–\$1,249
Nov. 19 (Tues)	Patron — \$200–\$599
Nov. 21 (Thurs)	Sustainer — \$75–\$199
Nov. 25 (Mon)	Presale ends; 1935ers, General Sales & Group Sales begin

**2025 MEMBER EVENTS** All members in Producer levels and up may attend Season Opening Weekend events, Immersive Events, and, if you qualify, Southampton Weekend. Donors in the \$6,000+ member categories are invited to attend the Chautauqua Guild Weekend. Artistic Director's Dinner is exclusive to ADC members and their guests. For pricing on Member Event bonus activities (panel discussions, dinners, and more) and how to order, see page 19. For more information, contact the Development office at [Development@osfashland.org](mailto:Development@osfashland.org).

Season Opening March 14–15	Southampton Society Weekend April 17–19	Chautauqua Guild Weekend July 11–13	Immersive Weekend III September 26–28
Artistic Director's Circle Dinner March 15	Immersive Weekend I (Outdoor Opening) June 13–15	Immersive Weekend II August 2–3	

# THE SHOWS OF 2025



## JULIUS CAESAR

“

### THE EVIL THAT MEN DO LIVES AFTER THEM

Julius Caesar returns to the heart of Rome victorious from war. But as he ascends to power, Brutus and the conspiring Cassius join forces to murder Caesar and save the great city from a dangerous dictator. In Shakespeare's famed political thriller, upheaval begets more upheaval, and traitorous actions threaten the very stability of Rome.

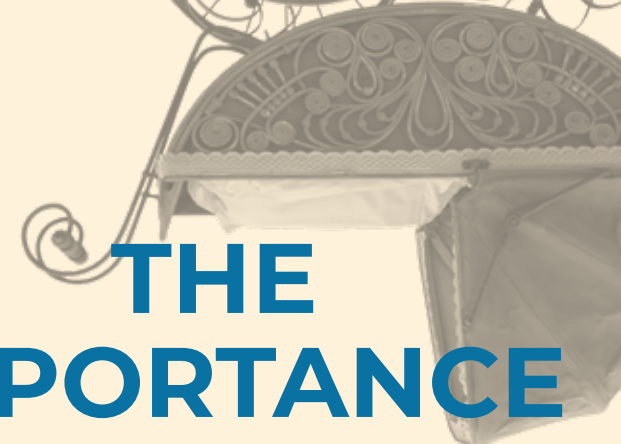
Known for their dynamic, physical storytelling, *upstart crow collective* returns with a bold all-female and nonbinary cast, which, under the direction of Associate Artistic Director Rosa Joshi, illuminates this tale's ancient themes of power, loyalty, and betrayal.

By **William Shakespeare**  
Directed by **Rosa Joshi**

Produced in association with  
*upstart crow collective*

**March 7 - October 26, 2025**

**Angus Bowmer Theatre**



## THE IMPORTANCE OF BEING EARNEST

“

### A COMEDY OF (HARDLY ANY) MANNERS

Director Desdemona Chiang transports Oscar Wilde's classic comedy of manners to the British Malay Peninsula, a colonial melting pot of South Asian, Chinese, and English communities.

Two rakish young men, Jack Worthing and Algernon Moncrieff, opt to navigate Victorian-era expectations of courtship simply by evading them. But when their personas and egos begin to collide, the pair get caught up in a wit-fueled whirlwind of mistaken identities and romantic snafus. This “trivial comedy for serious people” reveals the absurd lengths that humans will go to in pursuit of acceptance, love, and truth.

By **Oscar Wilde**  
Directed by **Desdemona Chiang**

**March 8 - October 25, 2025**

**Angus Bowmer Theatre**



# THE SHOWS OF 2025

## AUGUST WILSON'S JITNEY



### A RIDE OF REDEMPTION AND RECOGNITION

In 1977, as licensed cabs refuse to service Pittsburgh's predominantly Black "Hill District," a group of Black men run an unlicensed taxi company—the OG Uber, or a "jitney." But when the city threatens to shut down the business and owner Jim Becker's disgraced son returns after a 20-year prison sentence, potent secrets are revealed and the fragile threads binding these people together may come undone at last.

For his first production since being named OSF's Artistic Director, Tim Bond directs a formidable cast in August Wilson's masterwork. Overflowing with the auteur's signature poetry and hilarious banter, *Jitney* promises to be an unforgettable celebration of community, family bonds, and the endurance of the human spirit.

Directed by **Tim Bond**

**March 9 - July 20, 2025**

**Angus Bowmer Theatre**

# THE SHOWS OF 2025

## SHANE



### WHAT MAKES A GOOD MAN?

Ranchers, farmers, a looming range war, and a mysterious stranger with a violent past—for good reason, *Shane* is a classic Western. But when the novel debuted in 1947, what set it apart was its unusual moral center: a young boy seeing the tale through his own clear eyes.

And now this culturally authentic adaptation by Karen Zacarias (*Destiny of Desire*, *The Copper Children*) holds on to the heart of its literary source while widening the lens to encompass the real Wyoming of 1889, challenging what we think we know about the American West: its people, values, myths, heroes—and our own perceptions of good and evil.

By **Karen Zacarias**  
Adapted from the novel  
by **Jack Schaefer**  
Directed by **Blake Robison**

**July 31 - October 25, 2025**

**Angus Bowmer Theatre**  
*West Coast Premiere*

## FAT HAM



### A SOUTHERN- FRIED TAKE ON SHAKESPEARE'S HAMLET

In James Ijames's sizzling cookout comedy, the grill isn't the only thing turning up the heat. This deliciously funny play follows Juicy, a queer Black kid living in the South. When the ghost of his dead father appears at a family BBQ demanding revenge for his murder, Juicy must grapple with the decision to heed his phantom father's advice or remain true to himself.

This 2022 Pulitzer Prize-winning riff on Shakespeare's *Hamlet* is directed by Elizabeth Carter, the 2021 SDCF Lloyd Richards New Futures Resident Artist and the assistant director of OSF's 2022 production of August Wilson's *How I Learned What I Learned*.

By **James Ijames**  
Directed by **Elizabeth Carter**

**March 11 - June 27, 2025**

**Thomas Theatre**

## AS YOU LIKE IT



### LOVE WILL FIND A WAY

The Forest of Arden comes to life in the Thomas Theatre when Rosalind and her cousin Celia escape an oppressive uncle and take to the wilderness. Disguised as a man, Rosalind searches for her true love, Orlando—who doesn't recognize her in her new persona. But anything can happen in the forest, including poems in the trees, star-crossed shepherds, and a band of exiles who become family.

Identities are lost and true selves are found in Shakespeare's beloved comedy, bringing its magic to our most intimate theatre in this song-filled, 1960s-infused production by director Lisa Peterson (*Hamlet*, 2016).

By **William Shakespeare**  
Directed by **Lisa Peterson**

**April 16 - October 25, 2025**

**Thomas Theatre**



# THE SHOWS OF 2025

## QUIXOTE NUEVO



### A CLASSIC EPIC COMES ALIVE WITH A MODERN COMIC TWIST

In the fictional border town of La Plancha, Texas, a brilliant professor is battling dementia—but he won't go into assisted living without a fight. Imagining himself as Don Quixote, he enlists a friend and sets out on a journey to find his long-lost love, tilting at border patrol drones as he uncovers the truth of his past.

This modern comic adaptation by OSF favorite Octavio Solis (*Mother Road* and 2009's *Don Quixote*, among others) infuses Tejano culture and vibrant music into a story that *Broadway World* described as "groundbreaking and new while still retaining the heart of the original"—a magical retelling that celebrates life, love, and human courage.

By **Octavio Solis**  
Directed by **Lisa Portes**

**July 9 - October 24, 2025**

**Thomas Theatre**

## THE MERRY WIVES OF WINDSOR



### THE TOWN THAT TRICKS TOGETHER STICKS TOGETHER

Sir John Falstaff—Prince Hal's boisterous drinking buddy from the *Henry IV* plays—has come down in the world, out of money and stuck in the middle-class burg of Windsor. Hatching a plot to hit on two wealthy married women, he's soon ensnared in love triangles and trickery, and he hasn't even figured out that his prey are now deceiving him. Food, dancing, and dirty laundry are all part of the fun in Shakespeare's most domestic comedy—and part of what makes this small town a home.

OSF is delighted to welcome back longtime company member Terri McMahon, who directs this new production with a joyful, dance-filled flair.

By **William Shakespeare**  
Directed by **Terri McMahon**

**May 30 - October 12, 2025**

**Allen Elizabethan Theatre**

# THE SHOWS OF 2025

## INTO THE WOODS



### BE CAREFUL WHAT YOU WISH FOR

How far would you go to make your wish come true? Cinderella, Little Red Riding Hood, Jack (of beanstalk fame), and a baker and his wife find out when they take a journey into the woods. It's a magical, bewildering place full of witches, wolves, giants, and mysterious strangers where familiar fairy tales tangle and twist together. Wishes come true here, but at a price.

Amanda Dehnert's production of this smash-hit musical thrilled audiences in 2014, and we're bringing its hilarity, menace, irreverence—and eminently singable score—back to our theatre under the stars, where it will delight audiences of all ages during this season's celebration of our 90th anniversary.

Music and Lyrics  
by **Stephen Sondheim**  
Book by **James Lapine**  
Directed by **Amanda Dehnert**

**May 31 - October 11, 2025**

**Allen Elizabethan Theatre**

## GREEN SHOW



### FREE SUMMER AND FALL ENTERTAINMENT ON THE BRICKS!

A community favorite!

Our beloved free evening concert series returns to the Courtyard Stage in 2025, running May 30 – October 11, Tuesday through Saturday at 6:45 p.m. All ages welcome.

Watch [osfashland.org/greenshow](https://osfashland.org/greenshow) for our monthly schedule.

**Tuesday – Saturday, 6:45pm**

**May 30 - October 11, 2025**

**Courtyard Stage**



# EDUCATION & ENGAGEMENT

Make the most of your visit to OSF with these informative events that deepen your understanding of the plays you're seeing, the people who bring them to life, and the inner workings of OSF, onstage and off. Suitable for both newcomers and theatre aficionados, our education programs are a cornerstone of the OSF experience! For dates and times, see the 2025 calendar on pages 9–16.

## PREFACES

These smart and fun 30-minute sessions provide a keyhole through which to view a play. Available for every play and include history, background, introduction to the main characters, themes, and production choices. **\$12 per person.**

## POST-SHOW TALKBACKS

Join us for these exciting, informal discussions that take place approximately 10 minutes after the end of a performance, last about 30 minutes, and deepen the audience's connection with the art on our stages. For selected shows, Friday and Saturday afternoons in the Angus Bowmer and Thomas Theatres (see calendar). **Free** with a ticket to that performance.

## UNFOLDING JITNEY

This class will focus on *Jitney* by Pulitzer Prize winner August Wilson. Instructor TBA, but guests will include OSF Artistic Director and director of the '25 production, Tim Bond. Tickets to *Jitney* and *Julius Caesar* included. April 4–6. **Class and play tickets, \$475; Class only, \$300.**

## UNFOLDING JULIUS CAESAR

Take a deep dive into Shakespeare's play about leadership, ambition, tyranny, and power. The class will be taught by Associate Artistic Director and director of the '25 production, Rosa Joshi. Class price includes tickets to *Julius Caesar* and *Jitney*. May 16–18. **Class and play tickets, \$475; Class only, \$300.**

## SCHOOL VISIT PROGRAM

We are proud to continue this 40-year OSF legacy that introduces students to theatre and Shakespeare's plays in performance. This exciting visit includes live performances, talkbacks, and workshops that can take place in a school's theatre, auditorium, or gymnasium. Available in the fall of 2025.



Preface led by actor Tyrone Wilson. Photo by Stephen Kimbrell.

## CAMPUS TOUR

Operated by the Tudor Guild, this 1-hour tour provides an opportunity to discover the show behind the show, including information about the history of the Oregon Shakespeare Festival from past to present. Great for visitors of all ages. **\$15 per person.**

## BEHIND THE CURTAIN: SUMMER TOUR

Available on Wednesdays and Thursdays in July and August—and Fridays the rest of the season—this 1-hour family-friendly tour is ideal for younger playgoers. Tour OSF spaces while you learn about the different ingredients and technical magic of live theatre. **\$15 per person.**



Teaching Artist Annie Paul at a School Visit. Photo by Kim Budd.

# MARCH 2025

**Get Your Member Discount!** Members (Sustainer and above) get **25% off** for performances March 7–June 12 and Sept. 23–Oct. 26 **when you order during Presale.** After that, enjoy **10% off** if you order by March 6, 2025. (Tickets purchased or exchanged after March 6, 2025, will be full price.)

SUNDAY	MONDAY	TUESDAY	WEDNESDAY	THURSDAY	FRIDAY	SATURDAY
					<b>MARCH 7</b> Campus Tour 10:30 <b>CAESAR</b> @ <b>BMR</b> 8:00	<b>8</b> Campus Tour 10:30 <b>EARNEST</b> @ <b>BMR</b> 8:00
<b>9</b> <b>JITNEY</b> @ <b>BMR</b> 8:00	<b>N O N P L A Y S O N M O N D A Y S</b>	<b>11</b> <b>CAESAR</b> @ <b>BMR</b> 1:30 <b>FAT HAM</b> @ <b>THO</b> 1:30	<b>12</b> Preface-Earnest <b>CARP</b> 12:00 <b>EARNEST</b> @ <b>BMR</b> 1:30 Preface-Fat Ham <b>CARP</b> 5:30 <b>FAT HAM</b> @ <b>THO</b> 8:00	<b>13</b> <b>JITNEY</b> @ <b>BMR</b> 1:30	<b>14</b> Season Opening Event* Public Curtain Tour 9:30 Campus Tour 10:30 Preface-Caesar <b>CARP</b> 5:30 <b>CAESAR</b> @ <b>BMR</b> 8:00	<b>15</b> Season Opening Event* ADC Dinner** Campus Tour 10:30 Preface-Fat Ham <b>CARP</b> 12:00 <b>FAT HAM</b> @ <b>THO</b> 1:30 Preface-Earnest <b>CARP</b> 5:30 <b>EARNEST</b> @ <b>BMR</b> 8:00
<b>16</b> Preface-Jitney <b>CARP</b> 12:00 <b>JITNEY</b> @ <b>BMR</b> 1:30		<b>18</b> Preface-Jitney <b>CARP</b> 5:30 <b>JITNEY</b> @ <b>BMR</b> 8:00	<b>19</b> Preface-Caesar <b>CARP</b> 12:00 <b>CAESAR</b> @ <b>BMR</b> 1:30 Preface-Fat Ham <b>CARP</b> 5:30 <b>FAT HAM</b> @ <b>THO</b> 8:00	<b>20</b> <b>EARNEST</b> @ <b>BMR</b> 1:30 Preface-Jitney <b>CARP</b> 5:30 <b>JITNEY</b> @ <b>BMR</b> 8:00	<b>21</b> Public Curtain Tour 9:30 Campus Tour 10:30 <b>CAESAR</b> @ <b>BMR</b> 1:30 <b>FAT HAM</b> @ <b>THO</b> 1:30 Talkback-after Caesar <b>BMR</b> Preface-Earnest <b>CARP</b> 5:30 <b>EARNEST</b> @ <b>BMR</b> 8:00	<b>22</b> Campus Tour 10:30 Preface-Jitney <b>CARP</b> 12:00 <b>JITNEY</b> @ <b>BMR</b> 1:30 Preface-Fat Ham <b>CARP</b> 5:30 <b>CAESAR</b> @ <b>BMR</b> 8:00 <b>FAT HAM</b> @ <b>THO</b> 8:00
<b>23</b> <b>EARNEST</b> @ <b>BMR</b> 1:30 <b>FAT HAM</b> @ <b>THO</b> 1:30		<b>25</b> <b>CAESAR</b> @ <b>BMR</b> 1:30 <b>FAT HAM</b> @ <b>THO</b> 1:30 Preface-Earnest <b>CARP</b> 5:30 <b>EARNEST</b> @ <b>BMR</b> 8:00	<b>26</b> Preface-Jitney <b>CARP</b> 12:00 <b>JITNEY</b> @ <b>BMR</b> 1:30 Preface-Caesar <b>CARP</b> 5:30 <b>CAESAR</b> @ <b>BMR</b> 8:00 <b>FAT HAM</b> @ <b>THO</b> 8:00	<b>27</b> <b>EARNEST</b> @ <b>BMR</b> 1:30 Preface-Jitney <b>CARP</b> 5:30 <b>JITNEY</b> @ <b>BMR</b> 8:00	<b>28</b> Public Curtain Tour 9:30 Campus Tour 10:30 <b>CAESAR</b> @ <b>BMR</b> 1:30 <b>FAT HAM</b> @ <b>THO</b> 1:30 Talkback-after Caesar <b>BMR</b> Preface-Earnest <b>CARP</b> 5:30 <b>EARNEST</b> @ <b>BMR</b> 8:00	<b>29</b> Campus Tour 10:30 Preface-Jitney <b>CARP</b> 12:00 <b>JITNEY</b> @ <b>BMR</b> 1:30 Preface-Fat Ham <b>CARP</b> 5:30 <b>CAESAR</b> @ <b>BMR</b> 8:00 <b>FAT HAM</b> @ <b>THO</b> 8:00
<b>30</b> <b>EARNEST</b> @ <b>BMR</b> 1:30 <b>FAT HAM</b> @ <b>THO</b> 1:30						

\* Donors in the \$1,250+ categories are invited to join us for our Season Opening Member Event on March 14–15.  
\*\* Artistic Director's Circle donors are invited to the ADC Dinner on March 15. See page 19 for pricing on Member Event bonus activities (panel discussions, dinners, and more) and how to order.



KEY	
P	previews
O	opens
BMR	Angus Bowmer Theatre
THO	Thomas Theatre
GSS	Green Show Stage
CARP	Carpenter Hall

- **Previews** are performances just before the play officially opens, an important part of the artistic process. We love preview audiences!
- **Preface:** See page 8.
- **Campus Tour:** See page 8.
- **Public "Curtain" (Behind the Curtain) Tour:** See page 8.
- **Talkback:** See page 8.

# APRIL 2025

**Get Your Member Discount!** Members (Sustainer and above) get **25% off** for performances March 7–June 12 and Sept. 23–Oct. 26 **when you order during Presale**. After that, enjoy **10% off** if you order by March 6, 2025. *(Tickets purchased or exchanged after March 6, 2025, will be full price.)*

SUNDAY	MONDAY	TUESDAY	WEDNESDAY	THURSDAY	FRIDAY	SATURDAY
		<b>APRIL 1</b> Preface-Caesar CARP 5:30 <b>CAESAR BMR 8:00</b>	<b>2</b> Preface-Earrest CARP 12:00 <b>EARNEST BMR 1:30</b> <b>FAT HAM THO 1:30</b> Preface-Jitney CARP 5:30 <b>JITNEY BMR 8:00</b>	<b>3</b> <b>CAESAR BMR 1:30</b> Preface-Earrest CARP 5:30 <b>EARNEST BMR 8:00</b> <b>FAT HAM THO 8:00</b>	<b>4</b> Public Curtain Tour 9:30 Campus Tour 10:30 <b>JITNEY BMR 1:30</b> Talkback-after Jitney <b>BMR</b> Preface-Caesar CARP 5:30 <b>CAESAR BMR 8:00</b>	<b>5</b> Campus Tour 10:30 Preface-Fat Ham CARP 12:00 <b>EARNEST BMR 1:30</b> <b>FAT HAM THO 1:30</b> Talkback-after Fat Ham <b>THO</b> Preface-Jitney CARP 5:30 <b>JITNEY BMR 8:00</b>
<b>6</b> <b>CAESAR BMR 1:30</b> <b>FAT HAM THO 1:30</b>	<b>8</b> <b>CAESAR BMR 1:30</b> Preface-Jitney CARP 5:30 <b>JITNEY BMR 8:00</b>	<b>9</b> Preface-Earrest CARP 12:00 <b>EARNEST BMR 1:30</b> Preface-Caesar CARP 5:30 <b>CAESAR BMR 8:00</b>	<b>10</b> <b>JITNEY BMR 1:30</b> Preface-Earrest CARP 5:30 <b>EARNEST BMR 8:00</b>	<b>11</b> Public Curtain Tour 9:30 Campus Tour 10:30 <b>JITNEY BMR 1:30</b> Talkback-after Jitney <b>BMR</b> Preface-Caesar CARP 5:30 <b>CAESAR BMR 8:00</b> <b>FAT HAM THO 8:00</b>	<b>12</b> Campus Tour 10:30 Preface-Caesar CARP 12:00 <b>CAESAR BMR 1:30</b> <b>FAT HAM THO 1:30</b> Talkback-after Fat Ham <b>THO</b> Preface-Earrest CARP 5:30 <b>EARNEST BMR 8:00</b>	
<b>13</b> <b>JITNEY BMR 1:30</b>	<b>15</b> <b>JITNEY BMR 1:30</b> Preface-Earrest CARP 5:30 <b>EARNEST BMR 8:00</b>	<b>16</b> Preface-Earrest CARP 12:00 <b>EARNEST BMR 1:30</b> Preface-As You CARP 5:30 <b>JITNEY BMR 8:00</b> <b>AS YOU LIKE THO 8:00</b>	<b>17</b> Southampton Society Wknd* <b>JITNEY BMR 1:30</b> Preface-Caesar CARP 5:30 <b>CAESAR BMR 8:00</b> <b>FAT HAM THO 8:00</b>	<b>18</b> Southampton Society Wknd* Public Curtain Tour 9:30 Campus Tour 10:30 <b>CAESAR BMR 1:30</b> <b>FAT HAM THO 1:30</b> Talkback-after Caesar <b>BMR</b> Preface-Jitney CARP 5:30 <b>JITNEY BMR 8:00</b> <b>AS YOU LIKE THO 8:00</b>	<b>19</b> Southampton Society Wknd* Campus Tour 10:30 Preface-Fat Ham CARP 12:00 <b>CAESAR BMR 1:30</b> <b>FAT HAM THO 1:30</b> Talkback-after Fat Ham <b>BMR</b> Preface-As You CARP 5:30 <b>EARNEST BMR 8:00</b> <b>AS YOU LIKE THO 8:00</b>	
<b>20</b> <b>EARNEST BMR 1:30</b> <b>FAT HAM THO 1:30</b>	<b>22</b> <b>EARNEST BMR 1:30</b> Preface-Caesar CARP 5:30 <b>CAESAR BMR 8:00</b>	<b>23</b> Preface-As You CARP 12:00 <b>JITNEY BMR 1:30</b> <b>AS YOU LIKE THO 1:30</b> Preface-Earrest CARP 5:30 <b>EARNEST BMR 8:00</b> <b>FAT HAM THO 8:00</b>	<b>24</b> <b>CAESAR BMR 1:30</b> <b>FAT HAM THO 1:30</b> Preface-Jitney CARP 5:30 <b>JITNEY BMR 8:00</b>	<b>25</b> Public Curtain Tour 9:30 Campus Tour 10:30 <b>EARNEST BMR 1:30</b> <b>AS YOU LIKE THO 1:30</b> Talkback-after Earnest <b>BMR</b> Preface-Fat Ham CARP 5:30 <b>CAESAR BMR 8:00</b> <b>FAT HAM THO 8:00</b>	<b>26</b> Campus Tour 10:30 Preface-Jitney CARP 12:00 <b>JITNEY BMR 1:30</b> Preface-As You CARP 5:30 <b>EARNEST BMR 8:00</b> <b>AS YOU LIKE THO 8:00</b>	
<b>27</b> <b>CAESAR BMR 1:30</b> <b>FAT HAM THO 1:30</b>	<b>29</b> <b>CAESAR BMR 1:30</b> <b>FAT HAM THO 1:30</b> Preface-Jitney CARP 5:30 <b>JITNEY BMR 8:00</b>	<b>30</b> Preface-As You CARP 12:00 <b>EARNEST BMR 1:30</b> <b>AS YOU LIKE THO 1:30</b> Preface-Caesar CARP 5:30 <b>CAESAR BMR 8:00</b>	* Donors enrolled in the Southampton Legacy Society are invited to join us for the Southampton Society Weekend on April 17–19. For information on the Southampton Society, which supports OSF through planned gifts, please contact <a href="mailto:Development@osfashland.org">Development@osfashland.org</a> . See page 19 for pricing on Member Event bonus activities (panel discussions, dinners, and more) and how to order.			

KEY	
	previews
	opens
<b>BMR</b>	Angus Bowmer Theatre
<b>THO</b>	Thomas Theatre
<b>GSS</b>	Green Show Stage
<b>CARP</b>	Carpenter Hall

- **Previews** are performances just before the play officially opens, an important part of the artistic process. We love preview audiences!
- **Preface:** See page 8.
- **Campus Tour:** See page 8.
- **Public "Curtain" (Behind the Curtain) Tour:** See page 8.
- **Talkback:** See page 8.

## SEE HOW IT'S DONE WITH OUR UNIQUE TOURS

Learn how the art makes it from the page to the stage with our always-popular **Campus Tours** on Fridays and Saturdays, and in-depth "Behind the Curtain" tours on select dates all year.

# MAY 2025

**Get Your Member Discount!** Members (Sustainer and above) get **25% off** for performances March 7–June 12 and Sept. 23–Oct. 26 **when you order during Presale**. After that, enjoy **10% off** if you order by March 6, 2025. *(Tickets purchased or exchanged after March 6, 2025, will be full price.)*

SUNDAY	MONDAY	TUESDAY	WEDNESDAY	THURSDAY	FRIDAY	SATURDAY
				<b>MAY 1</b> <b>JITNEY BMR 1:30</b> <b>AS YOU LIKE THO 1:30</b> Preface-Earrest CARP 5:30 <b>EARNEST BMR 8:00</b>	<b>2</b> Public Curtain Tour 9:30 Campus Tour 10:30 <b>CAESAR BMR 1:30</b> <b>FAT HAM THO 1:30</b> Talkback-after Caesar <b>BMR</b> Preface-Jitney CARP 5:30 <b>JITNEY BMR 8:00</b> <b>AS YOU LIKE THO 8:00</b>	<b>3</b> Campus Tour 10:30 Preface-Earrest CARP 12:00 <b>EARNEST BMR 1:30</b> <b>FAT HAM THO 1:30</b> Talkback-after Fat Ham <b>THO</b> Preface-Fat Ham CARP 5:30 <b>CAESAR BMR 8:00</b> <b>FAT HAM THO 8:00</b>
<b>4</b> <b>JITNEY BMR 1:30</b> <b>AS YOU LIKE THO 1:30</b>	<b>6</b> <b>CAESAR BMR 1:30</b> <b>FAT HAM THO 1:30</b> Preface-Jitney CARP 5:30 <b>JITNEY BMR 8:00</b>	<b>7</b> Preface-As You CARP 12:00 <b>EARNEST BMR 1:30</b> <b>AS YOU LIKE THO 1:30</b> Preface-Caesar CARP 5:30 <b>CAESAR BMR 8:00</b> <b>FAT HAM THO 8:00</b>	<b>8</b> <b>JITNEY BMR 1:30</b> <b>AS YOU LIKE THO 1:30</b> Preface-Earrest CARP 5:30 <b>EARNEST BMR 8:00</b>	<b>9</b> Public Curtain Tour 9:30 Campus Tour 10:30 <b>CAESAR BMR 1:30</b> <b>FAT HAM THO 1:30</b> Talkback-after Caesar <b>BMR</b> Preface-Jitney CARP 12:00 <b>JITNEY BMR 8:00</b>	<b>10</b> Campus Tour 10:30 Preface-Jitney CARP 12:00 <b>JITNEY BMR 1:30</b> <b>AS YOU LIKE THO 1:30</b> Talkback-after As You <b>THO</b> Preface-As You CARP 5:30 <b>EARNEST BMR 8:00</b> <b>AS YOU LIKE THO 8:00</b>	
<b>11</b> <b>EARNEST BMR 1:30</b> <b>FAT HAM THO 1:30</b>	<b>13</b> <b>CAESAR BMR 1:30</b> <b>FAT HAM THO 1:30</b> Preface-Earrest CARP 5:30 <b>EARNEST BMR 8:00</b>	<b>14</b> Preface-As You CARP 12:00 <b>JITNEY BMR 1:30</b> <b>AS YOU LIKE THO 1:30</b> Preface-Caesar CARP 5:30 <b>CAESAR BMR 8:00</b>	<b>15</b> <b>CAESAR BMR 1:30</b> <b>FAT HAM THO 1:30</b> Preface-Earrest CARP 5:30 <b>EARNEST BMR 8:00</b>	<b>16</b> Public Curtain Tour 9:30 Campus Tour 10:30 <b>EARNEST BMR 1:30</b> <b>FAT HAM THO 1:30</b> Talkback-after Earnest <b>BMR</b> Preface-Jitney CARP 5:30 <b>JITNEY BMR 8:00</b> <b>AS YOU LIKE THO 8:00</b>	<b>17</b> Campus Tour 10:30 Preface-Jitney CARP 12:00 <b>JITNEY BMR 1:30</b> <b>AS YOU LIKE THO 1:30</b> Talkback-after As You <b>BMR</b> Preface-Fat Ham CARP 5:30 <b>CAESAR BMR 8:00</b> <b>FAT HAM THO 8:00</b>	
<b>18</b> <b>EARNEST BMR 1:30</b> <b>AS YOU LIKE THO 1:30</b>	<b>20</b> <b>CAESAR BMR 1:30</b> Preface-Jitney CARP 5:30 <b>JITNEY BMR 8:00</b>	<b>21</b> Preface-As You CARP 12:00 <b>EARNEST BMR 1:30</b> <b>AS YOU LIKE THO 1:30</b> Preface-Caesar CARP 5:30 <b>CAESAR BMR 8:00</b>	<b>22</b> <b>JITNEY BMR 1:30</b> <b>AS YOU LIKE THO 1:30</b> Preface-Earrest CARP 5:30 <b>EARNEST BMR 8:00</b>	<b>23</b> Public Curtain Tour 9:30 Campus Tour 10:30 <b>EARNEST BMR 1:30</b> <b>AS YOU LIKE THO 1:30</b> Talkback-after Earnest <b>BMR</b> Preface-Caesar CARP 5:30 <b>CAESAR BMR 8:00</b> <b>FAT HAM THO 8:00</b>	<b>24</b> Campus Tour 10:30 Preface-Jitney CARP 12:00 <b>JITNEY BMR 1:30</b> <b>AS YOU LIKE THO 1:30</b> Talkback-after As You <b>THO</b> Preface-Fat Ham CARP 5:30 <b>EARNEST BMR 8:00</b> <b>FAT HAM THO 8:00</b>	
<b>25</b> <b>CAESAR BMR 1:30</b> <b>FAT HAM THO 1:30</b>	<b>27</b> <b>EARNEST BMR 1:30</b> <b>FAT HAM THO 1:30</b> Preface-Caesar CARP 5:30 <b>CAESAR BMR 8:00</b> <b>FAT HAM THO 8:00</b>	<b>28</b> Preface-Jitney CARP 12:00 <b>JITNEY BMR 1:30</b> Preface-Earrest CARP 5:30 <b>EARNEST BMR 8:00</b> <b>AS YOU LIKE THO 8:00</b>	<b>29</b> <b>CAESAR BMR 1:30</b> <b>FAT HAM THO 1:30</b> Preface-Jitney CARP 5:30 <b>JITNEY BMR 8:00</b>	<b>30</b> Public Curtain Tour 9:30 Campus Tour 10:30 <b>EARNEST BMR 1:30</b> <b>FAT HAM THO 1:30</b> Talkback-after Earnest <b>BMR</b> Preface-Merry CARP 5:30 Green Show <b>GSS 6:45</b> <b>CAESAR BMR 8:00</b> <b>MERRY ALLEN 8:00</b>	<b>31</b> Campus Tour 10:30 Preface-As You CARP 12:00 <b>JITNEY BMR 1:30</b> <b>AS YOU LIKE THO 1:30</b> Talkback-after As You <b>THO</b> Preface-Woods CARP 5:30 Green Show <b>GSS 6:45</b> <b>CAESAR BMR 8:00</b> <b>WOODS ALLEN 8:00</b>	

## ENJOY ALL OF YOUR INTERMISSION

Take advantage of our pre-order concession services in all of our theatres. Place your order before the show and have your beverages, sweets, and savories waiting for you at intermission.

- **Previews** are performances just before the play officially opens, an important part of the artistic process. We love preview audiences!
- **Preface:** See page 8.
- **Campus Tour:** See page 8.
- **Public "Curtain" (Behind the Curtain) Tour:** See page 8.
- **Talkback:** See page 8.
- **Green Show:** Concerts on the Bricks. Free. For monthly artist schedule, see [osfashland.org/greenshow](http://osfashland.org/greenshow).



# JUNE 2025

**Get Your Member Discount!** Members (Sustainer and above) get **25% off** for performances March 7–June 12 and Sept. 23–Oct. 26 **when you order during Presale**. After that, enjoy **10% off** if you order by March 6, 2025. *(Tickets purchased or exchanged after March 6, 2025, will be full price.)*

# JULY 2025

**Get Your Member Discount!** Members (Sustainer and above) get **25% off** for performances March 7–June 12 and Sept. 23–Oct. 26 **when you order during Presale**. After that, enjoy **10% off** if you order by March 6, 2025. *(Tickets purchased or exchanged after March 6, 2025, will be full price.)*

SUNDAY	MONDAY	TUESDAY	WEDNESDAY	THURSDAY	FRIDAY	SATURDAY
<b>JUNE 1</b> EARNEST BMR 1:30 AS YOU LIKE THO 1:30	<b>3</b> EARNEST BMR 1:30 Preface-Caesar CARP 5:30 Green Show GSS 6:45 CAESAR BMR 8:00 FAT HAM THO 8:00	<b>4</b> Preface-Jitney CARP 12:00 JITNEY BMR 1:30 Preface-Merry CARP 5:30 Green Show GSS 6:45 EARNEST BMR 8:00 MERRY ALLEN 8:00	<b>5</b> CAESAR BMR 1:30 FAT HAM THO 1:30 Green Show GSS 6:45 JITNEY BMR 8:00 WOODS ALLEN 8:00	<b>6</b> Public Curtain Tour 9:30 Campus Tour 10:30 JITNEY BMR 1:30 AS YOU LIKE THO 1:30 Talkback-after Jitney BMR Preface-Earnest CARP 5:30 Green Show GSS 6:45 EARNEST BMR 8:00 MERRY ALLEN 8:00	<b>7</b> Campus Tour 10:30 Preface-As You CARP 12:00 EARNEST BMR 1:30 AS YOU LIKE THO 1:30 Talkback-after As You THO Preface-Woods CARP 5:30 Green Show GSS 6:45 JITNEY BMR 8:00 AS YOU LIKE THO 8:00 WOODS ALLEN 8:00	
<b>8</b> CAESAR BMR 1:30 FAT HAM THO 1:30	<b>10</b> EARNEST BMR 1:30 AS YOU LIKE THO 1:30 Preface-Caesar CARP 5:30 Green Show GSS 6:45 CAESAR BMR 8:00 FAT HAM THO 8:00	<b>11</b> Preface-As You CARP 12:00 JITNEY BMR 1:30 AS YOU LIKE THO 1:30 Preface-Merry CARP 5:30 Green Show GSS 6:45 EARNEST BMR 8:00 MERRY ALLEN 8:00	<b>12</b> CAESAR BMR 1:30 FAT HAM THO 1:30 Preface-Jitney CARP 5:30 Green Show GSS 6:45 JITNEY BMR 8:00 WOODS ALLEN 8:00	<b>13</b> Immersive Weekend I* Public Curtain Tour 9:30 Campus Tour 10:30 CAESAR BMR 1:30 Talkback-after Caesar BMR Preface-Merry CARP 5:30 Green Show GSS 6:45 EARNEST BMR 8:00 MERRY ALLEN 8:00	<b>14</b> Immersive Weekend I* Campus Tour 10:30 Preface-Earnest CARP 12:00 EARNEST BMR 1:30 AS YOU LIKE THO 1:30 Talkback-after As You THO Preface-Woods CARP 5:30 Green Show GSS 6:45 JITNEY BMR 8:00 WOODS ALLEN 8:00	
<b>15</b> Immersive Weekend I* CAESAR BMR 1:30 FAT HAM THO 1:30	<b>17</b> AS YOU LIKE THO 1:30 Preface-Jitney CARP 5:30 Green Show GSS 6:45 JITNEY BMR 8:00 WOODS ALLEN 8:00	<b>18</b> Preface-Fat Ham CARP 12:00 CAESAR BMR 1:30 FAT HAM THO 1:30 Preface-Merry CARP 5:30 Green Show GSS 6:45 EARNEST BMR 8:00 MERRY ALLEN 8:00	<b>19</b> JITNEY BMR 1:30 AS YOU LIKE THO 1:30 Preface-Caesar CARP 5:30 Green Show GSS 6:45 CAESAR BMR 8:00 WOODS ALLEN 8:00	<b>20</b> Public Curtain Tour 9:30 Campus Tour 10:30 CAESAR BMR 1:30 FAT HAM THO 1:30 Talkback-after Caesar BMR Preface-Earnest CARP 5:30 Green Show GSS 6:45 EARNEST BMR 8:00 MERRY ALLEN 8:00	<b>21</b> Campus Tour 10:30 Preface-Earnest CARP 12:00 EARNEST BMR 1:30 FAT HAM THO 1:30 Talkback-after Fat Ham THO Preface-Woods CARP 5:30 Green Show GSS 6:45 JITNEY BMR 8:00 WOODS ALLEN 8:00	
<b>22</b> JITNEY BMR 1:30 AS YOU LIKE THO 1:30 CAESAR BMR 8:00 MERRY ALLEN 8:00	<b>24</b> JITNEY BMR 1:30 Preface-Caesar CARP 5:30 Green Show GSS 6:45 CAESAR BMR 8:00 MERRY ALLEN 8:00	<b>25</b> Public Curtain Tour 10:30 Preface-As You CARP 12:00 EARNEST BMR 1:30 AS YOU LIKE THO 1:30 Preface-Jitney CARP 5:30 Green Show GSS 6:45 JITNEY BMR 8:00 WOODS ALLEN 8:00	<b>26</b> Public Curtain Tour 10:30 CAESAR BMR 1:30 FAT HAM THO 1:30 Preface-Merry CARP 5:30 Green Show GSS 6:45 EARNEST BMR 8:00 AS YOU LIKE THO 8:00 MERRY ALLEN 8:00	<b>27</b> Campus Tour 10:30 JITNEY BMR 1:30 Talkback-after Jitney BMR Preface-Woods CARP 5:30 Green Show GSS 6:45 CAESAR BMR 8:00 FAT HAM THO 8:00 WOODS ALLEN 8:00	<b>28</b> Campus Tour 10:30 Preface-Caesar CARP 12:00 CAESAR BMR 1:30 Preface-Merry CARP 5:30 Green Show GSS 6:45 EARNEST BMR 8:00 MERRY ALLEN 8:00	
<b>29</b> EARNEST BMR 1:30 WOODS ALLEN 8:00						

SUNDAY	MONDAY	TUESDAY	WEDNESDAY	THURSDAY	FRIDAY	SATURDAY
		<b>JULY 1</b> EARNEST BMR 1:30 Preface-Caesar CARP 5:30 Green Show GSS 6:45 CAESAR BMR 8:00 WOODS ALLEN 8:00	<b>2</b> Public Curtain Tour 10:30 Preface-Jitney CARP 12:00 JITNEY BMR 1:30 Preface-Merry CARP 5:30 Green Show GSS 6:45 EARNEST BMR 8:00 MERRY ALLEN 8:00	<b>3</b> Public Curtain Tour 10:30 CAESAR BMR 1:30 Preface-Woods CARP 5:30 Green Show GSS 6:45 JITNEY BMR 8:00 WOODS ALLEN 8:00	<b>4</b> CAESAR BMR 1:30 Talkback-after Caesar BMR Preface-Merry CARP 5:30 Green Show GSS 6:45 EARNEST BMR 8:00 AS YOU LIKE THO 8:00 MERRY ALLEN 8:00	<b>5</b> Campus Tour 10:30 Preface-As You CARP 12:00 EARNEST BMR 1:30 AS YOU LIKE THO 1:30 Talkback-after As You BMR Preface-Woods CARP 5:30 Green Show GSS 6:45 JITNEY BMR 8:00 WOODS ALLEN 8:00
<b>6</b> JITNEY BMR 1:30 CAESAR BMR 8:00 MERRY ALLEN 8:00	<b>8</b> JITNEY BMR 1:30 Preface-Earnest CARP 5:30 Green Show GSS 6:45 EARNEST BMR 8:00 MERRY ALLEN 8:00	<b>9</b> Public Curtain Tour 10:30 Preface-Caesar CARP 12:00 CAESAR BMR 1:30 Preface-Woods CARP 5:30 Green Show GSS 6:45 JITNEY BMR 8:00 QUIXOTE THO 8:00 WOODS ALLEN 8:00	<b>10</b> Public Curtain Tour 10:30 CAESAR BMR 1:30 Preface-As You CARP 5:30 Green Show GSS 6:45 EARNEST BMR 8:00 AS YOU LIKE THO 8:00 MERRY ALLEN 8:00	<b>11</b> Chautauqua Guild Weekend* Campus Tour 10:30 JITNEY BMR 1:30 QUIXOTE THO 1:30 Talkback-after Jitney BMR Preface-Woods CARP 5:30 Green Show GSS 6:45 CAESAR BMR 8:00 WOODS ALLEN 8:00	<b>12</b> Chautauqua Guild Weekend* Campus Tour 10:30 Preface-Jitney CARP 12:00 JITNEY BMR 1:30 QUIXOTE THO 1:30 Preface-Merry CARP 5:30 Green Show GSS 6:45 EARNEST BMR 8:00 AS YOU LIKE THO 8:00 MERRY ALLEN 8:00	
<b>13</b> Chautauqua Guild Weekend* Preface-Quixote CARP 12:00 EARNEST BMR 1:30 QUIXOTE THO 1:30 CAESAR BMR 8:00 WOODS ALLEN 8:00	<b>15</b> Preface-Woods CARP 5:30 Green Show GSS 6:45 JITNEY BMR 8:00 WOODS ALLEN 8:00	<b>16</b> Public Curtain Tour 10:30 Preface-Caesar CARP 12:00 CAESAR BMR 1:30 QUIXOTE THO 1:30 Preface-Earnest CARP 5:30 Green Show GSS 6:45 EARNEST BMR 8:00 MERRY ALLEN 8:00	<b>17</b> Public Curtain Tour 10:30 EARNEST BMR 1:30 AS YOU LIKE THO 1:30 Preface-Woods CARP 5:30 Green Show GSS 6:45 JITNEY BMR 8:00 WOODS ALLEN 8:00	<b>18</b> Campus Tour 10:30 CAESAR BMR 1:30 QUIXOTE THO 1:30 Talkback-after Caesar BMR Preface-Merry CARP 5:30 Green Show GSS 6:45 EARNEST BMR 8:00 AS YOU LIKE THO 8:00 MERRY ALLEN 8:00	<b>19</b> Campus Tour 10:30 Preface-Quixote CARP 12:00 CAESAR BMR 1:30 QUIXOTE THO 1:30 Talkback-after Quixote THO Preface-Jitney CARP 5:30 Green Show GSS 6:45 JITNEY BMR 8:00 QUIXOTE THO 8:00 WOODS ALLEN 8:00	
<b>20</b> JITNEY BMR 1:30 AS YOU LIKE THO 1:30	<b>22</b> QUIXOTE THO 1:30 Preface-Merry CARP 5:30 Green Show GSS 6:45 MERRY ALLEN 8:00	<b>23</b> Public Curtain Tour 10:30 Preface-As You CARP 12:00 AS YOU LIKE THO 1:30 Preface-Woods CARP 5:30 Green Show GSS 6:45 WOODS ALLEN 8:00	<b>24</b> Public Curtain Tour 10:30 QUIXOTE THO 1:30 Preface-Caesar CARP 5:30 Green Show GSS 6:45 CAESAR BMR 8:00 MERRY ALLEN 8:00	<b>25</b> Campus Tour 10:30 AS YOU LIKE THO 1:30 Preface-Woods CARP 5:30 Green Show GSS 6:45 QUIXOTE THO 8:00 WOODS ALLEN 8:00	<b>26</b> Campus Tour 10:30 Preface-Quixote CARP 12:00 CAESAR BMR 1:30 QUIXOTE THO 1:30 Talkback-after Quixote THO Preface-Earnest CARP 5:30 Green Show GSS 6:45 EARNEST BMR 8:00 AS YOU LIKE THO 8:00 MERRY ALLEN 8:00	
<b>27</b> AS YOU LIKE THO 1:30	<b>29</b> AS YOU LIKE THO 1:30 Preface-Woods CARP 5:30 Green Show GSS 6:45 WOODS ALLEN 8:00	<b>30</b> Public Curtain Tour 10:30 Preface-Quixote CARP 12:00 CAESAR BMR 1:30 QUIXOTE THO 1:30 Preface-Earnest CARP 5:30 Green Show GSS 6:45 EARNEST BMR 8:00 MERRY ALLEN 8:00	<b>31</b> Public Curtain Tour 10:30 SHANE BMR 1:30 AS YOU LIKE THO 1:30 Preface-Woods CARP 5:30 Green Show GSS 6:45 WOODS ALLEN 8:00			

\* Donors in the \$1,250+ categories are invited to join us for Immersive Weekend I on June 13–15. See page 19 for pricing on Member Event bonus activities (panel discussions, dinners, and more) and how to order.

\* Donors in the \$6,000+ categories are invited to join us for the Chautauqua Guild Weekend, July 11–13. See page 19 for pricing on Member Event bonus activities (panel discussions, dinners, and more) and how to order.

- **Previews** are performances just before the play officially opens, an important part of the artistic process. We love preview audiences!
- **Preface:** See page 8.
- **Campus Tour:** See page 8.
- **Public "Curtain" (Behind the Curtain) Tour:** See page 8.
- **Talkback:** See page 8.
- **Green Show:** Concerts on the Bricks. Free. For monthly artist schedule, see [osfashland.org/greenshow](http://osfashland.org/greenshow).



Photo by Jenny Graham.

## DISCOVER BRASS RUBBING

Channel your inner artisan with the age-old process of Brass Rubbing, a medieval craft that even Shakespeare would love! This hands-on experience offers a fun and unique glimpse into the past and a beautiful piece of artwork to take home. In the summer months, Wednesday-Saturday, 10am–1pm, Bill Patton Garden (behind the Allen Elizabethan Theatre.)

KEY	
<b>P</b>	previews
<b>O</b>	opens
<b>C</b>	closes
<b>i</b>	ASL interpreted
<b>BMR</b>	Angus Bowmer Theatre
<b>THO</b>	Thomas Theatre
<b>ALLEN</b>	Allen Elizabethan Theatre
<b>GSS</b>	Green Show Stage
<b>CARP</b>	Carpenter Hall

KEY	
<b>P</b>	previews
<b>O</b>	opens
<b>C</b>	closes
<b>i</b>	ASL interpreted
<b>BMR</b>	Angus Bowmer Theatre
<b>THO</b>	Thomas Theatre
<b>ALLEN</b>	Allen Elizabethan Theatre
<b>GSS</b>	Green Show Stage
<b>CARP</b>	Carpenter Hall

# AUGUST 2025

Get Your Member Discount! Members (Sustainer and above) get **25% off** for performances March 7–June 12 and Sept. 23–Oct. 26 **when you order during Presale**. After that, enjoy **10% off** if you order by March 6, 2025. *(Tickets purchased or exchanged after March 6, 2025, will be full price.)*

# SEPTEMBER 2025

Get Your Member Discount! Members (Sustainer and above) get **25% off** for performances March 7–June 12 and Sept. 23–Oct. 26 **when you order during Presale**. After that, enjoy **10% off** if you order by March 6, 2025. *(Tickets purchased or exchanged after March 6, 2025, will be full price.)*

SUNDAY MONDAY TUESDAY WEDNESDAY THURSDAY FRIDAY SATURDAY

SUNDAY MONDAY TUESDAY WEDNESDAY THURSDAY FRIDAY SATURDAY

KEY	
<b>BMR</b>	Angus Bowmer Theatre
<b>THO</b>	Thomas Theatre
<b>ALLEN</b>	Allen Elizabethan Theatre
<b>GSS</b>	Green Show Stage
<b>CARP</b>	Carpenter Hall

- **Preface:** See page 8.
- **Campus Tour:** See page 8.
- **Public "Curtain" (Behind the Curtain) Tour:** See page 8.
- **Talkback:** See page 8.
- **Green Show:** Concerts on the Bricks. Free. For monthly artist schedule, see [osfashland.org/greenshow](http://osfashland.org/greenshow).

## AUGUST 1

Campus Tour 10:30  
**SHANE** **BMR** 1:30  
**QUIXOTE** **THO** 1:30  
 Preface-Merry **CARP** 5:30  
 Green Show **GSS** 6:45  
**EARNEST** **BMR** 8:00  
**AS YOU LIKE** **THO** 8:00  
**MERRY ALLEN** 8:00

## 2

Immersive Weekend II\*  
 Campus Tour 10:30  
 Preface-As You **CARP** 12:00  
**EARNEST** **BMR** 1:30  
**AS YOU LIKE** **THO** 1:30  
 Talkback-after As You **THO**  
 Preface-Shane **CARP** 5:30  
 Green Show **GSS** 6:45  
**SHANE** **BMR** 8:00  
**QUIXOTE** **THO** 8:00  
**WOODS ALLEN** 8:00

## 3

Immersive Weekend II\*  
**CAESAR** **BMR** 1:30  
**QUIXOTE** **THO** 1:30  
**EARNEST** **BMR** 8:00

## 5

**QUIXOTE** **THO** 1:30  
 Preface-Merry **CARP** 5:30  
 Green Show **GSS** 6:45  
**EARNEST** **BMR** 8:00  
**MERRY ALLEN** 8:00

## 6

Public Curtain Tour 10:30  
 Preface-As You **CARP** 12:00  
**AS YOU LIKE** **THO** 1:30  
 Preface-Woods **CARP** 5:30  
 Green Show **GSS** 6:45  
**SHANE** **BMR** 8:00  
**WOODS ALLEN** 8:00

## 7

Public Curtain Tour 10:30  
**CAESAR** **BMR** 1:30  
**QUIXOTE** **THO** 1:30  
 Preface-Merry **CARP** 5:30  
 Green Show **GSS** 6:45  
**EARNEST** **BMR** 8:00  
**MERRY ALLEN** 8:00

## 8

Campus Tour 10:30  
**CAESAR** **BMR** 1:30  
**QUIXOTE** **THO** 1:30  
 Talkback-after Caesar **BMR**  
 Preface-Shane **CARP** 5:30  
 Green Show **GSS** 6:45  
**SHANE** **BMR** 8:00  
**AS YOU LIKE** **THO** 8:00  
**WOODS ALLEN** 8:00

## 9

Campus Tour 10:30  
 Preface-Earnest **CARP** 12:00  
**EARNEST** **BMR** 1:30  
**AS YOU LIKE** **THO** 1:30  
 Talkback-after As You **THO**  
 Preface-Caesar **CARP** 5:30  
 Green Show **GSS** 6:45  
**CAESAR** **BMR** 8:00  
**QUIXOTE** **THO** 8:00  
**MERRY ALLEN** 8:00

## 7

**CAESAR** **BMR** 1:30  
**QUIXOTE** **THO** 1:30  
**SHANE** **BMR** 8:00  
**WOODS ALLEN** 8:00

## SEPTEMBER 2

**CAESAR** **BMR** 1:30  
**QUIXOTE** **THO** 1:30  
 Preface-Merry **CARP** 5:30  
 Green Show **GSS** 6:45  
**EARNEST** **BMR** 8:00  
**MERRY ALLEN** 8:00

## 3

Preface-As You **CARP** 12:00  
**SHANE** **BMR** 1:30  
**AS YOU LIKE** **THO** 1:30  
 Preface-Woods **CARP** 5:30  
 Green Show **GSS** 6:45  
**CAESAR** **BMR** 8:00  
**WOODS ALLEN** 8:00

## 4

**EARNEST** **BMR** 1:30  
**AS YOU LIKE** **THO** 1:30  
 Preface-Caesar **CARP** 5:30  
 Green Show **GSS** 6:45  
**CAESAR** **BMR** 8:00  
**MERRY ALLEN** 8:00

## 5

Public Curtain Tour 9:30  
 Campus Tour 10:30  
**EARNEST** **BMR** 1:30  
**QUIXOTE** **THO** 1:30  
 Talkback-after Earnest **BMR**  
 Preface-Shane **CARP** 5:30  
 Green Show **GSS** 6:45  
**SHANE** **BMR** 8:00  
**AS YOU LIKE** **THO** 8:00  
**WOODS ALLEN** 8:00

## 6

Campus Tour 10:30  
 Preface-Shane **CARP** 12:00  
**SHANE** **BMR** 1:30  
**AS YOU LIKE** **THO** 1:30  
 Talkback-after As You **THO**  
 Preface-Merry **CARP** 5:30  
 Green Show **GSS** 6:45  
**EARNEST** **BMR** 8:00  
**QUIXOTE** **THO** 8:00  
**MERRY ALLEN** 8:00

## 10

**EARNEST** **BMR** 1:30  
**AS YOU LIKE** **THO** 1:30  
**SHANE** **BMR** 8:00

## 12

**SHANE** **BMR** 1:30  
**AS YOU LIKE** **THO** 1:30  
 Preface-Caesar **CARP** 5:30  
 Green Show **GSS** 6:45  
**CAESAR** **BMR** 8:00  
**WOODS ALLEN** 8:00

## 13

Public Curtain Tour 10:30  
 Preface-Earnest **CARP** 5:30  
 Green Show **GSS** 6:45  
**EARNEST** **BMR** 8:00  
**MERRY ALLEN** 8:00

## 14

Public Curtain Tour 10:30  
**EARNEST** **BMR** 1:30  
**QUIXOTE** **THO** 1:30  
 Preface-Woods **CARP** 5:30  
 Green Show **GSS** 6:45  
**SHANE** **BMR** 8:00  
**WOODS ALLEN** 8:00

## 15

Campus Tour 10:30  
**SHANE** **BMR** 1:30  
**AS YOU LIKE** **THO** 1:30  
 Talkback-after Shane **BMR**  
 Preface-Merry **CARP** 5:30  
 Green Show **GSS** 6:45  
**EARNEST** **BMR** 8:00  
**QUIXOTE** **THO** 8:00  
**MERRY ALLEN** 8:00

## 16

Campus Tour 10:30  
 Preface-Quixote **CARP** 12:00  
**CAESAR** **BMR** 1:30  
**QUIXOTE** **THO** 1:30  
 Talkback-after Quixote **THO**  
 Preface-Shane **CARP** 5:30  
 Green Show **GSS** 6:45  
**SHANE** **BMR** 8:00  
**AS YOU LIKE** **THO** 8:00  
**WOODS ALLEN** 8:00

## 14

**CAESAR** **BMR** 1:30  
**QUIXOTE** **THO** 1:30  
**EARNEST** **BMR** 8:00  
**MERRY ALLEN** 8:00

## 16

**QUIXOTE** **THO** 1:30  
 Preface-Merry **CARP** 5:30  
 Green Show **GSS** 6:45  
**EARNEST** **BMR** 8:00  
**MERRY ALLEN** 8:00

## 17

Preface-As You **CARP** 12:00  
**SHANE** **BMR** 1:30  
**AS YOU LIKE** **THO** 1:30  
 Preface-Caesar **CARP** 5:30  
 Green Show **GSS** 6:45  
**CAESAR** **BMR** 8:00  
**WOODS ALLEN** 8:00

## 18

**CAESAR** **BMR** 1:30  
**QUIXOTE** **THO** 1:30  
 Preface-Earnest **CARP** 5:30  
 Green Show **GSS** 6:45  
**EARNEST** **BMR** 8:00  
**MERRY ALLEN** 8:00

## 19

Public Curtain Tour 9:30  
 Campus Tour 10:30  
**CAESAR** **BMR** 1:30  
**QUIXOTE** **THO** 1:30  
 Talkback-after Caesar **BMR**  
 Preface-Woods **CARP** 5:30  
 Green Show **GSS** 6:45  
**SHANE** **BMR** 8:00  
**AS YOU LIKE** **THO** 8:00  
**WOODS ALLEN** 8:00

## 20

Campus Tour 10:30  
 Preface-Shane **CARP** 12:00  
**SHANE** **BMR** 1:30  
**AS YOU LIKE** **THO** 1:30  
 Talkback-after As You **THO**  
 Preface-Merry **CARP** 5:30  
 Green Show **GSS** 6:45  
**EARNEST** **BMR** 8:00  
**QUIXOTE** **THO** 8:00  
**MERRY ALLEN** 8:00

## 17

**EARNEST** **BMR** 1:30  
**AS YOU LIKE** **THO** 1:30  
**CAESAR** **BMR** 8:00

## 19

**CAESAR** **BMR** 1:30  
**QUIXOTE** **THO** 1:30  
 Preface-Merry **CARP** 5:30  
 Green Show **GSS** 6:45  
**MERRY ALLEN** 8:00

## 20

Public Curtain Tour 10:30  
 Preface-Earnest **CARP** 12:00  
**EARNEST** **BMR** 1:30  
**AS YOU LIKE** **THO** 1:30  
 Preface-Caesar **CARP** 5:30  
 Green Show **GSS** 6:45  
**CAESAR** **BMR** 8:00  
**WOODS ALLEN** 8:00

## 21

Public Curtain Tour 10:30  
**SHANE** **BMR** 1:30  
**QUIXOTE** **THO** 1:30  
 Preface-Merry **CARP** 5:30  
 Green Show **GSS** 6:45  
**EARNEST** **BMR** 8:00  
**MERRY ALLEN** 8:00

## 22

Campus Tour 10:30  
**CAESAR** **BMR** 1:30  
**QUIXOTE** **THO** 1:30  
 Talkback-after Caesar **BMR**  
 Preface-Woods **CARP** 5:30  
 Green Show **GSS** 6:45  
**SHANE** **BMR** 8:00  
**AS YOU LIKE** **THO** 8:00  
**WOODS ALLEN** 8:00

## 23

Campus Tour 10:30  
 Preface-Shane **CARP** 12:00  
**SHANE** **BMR** 1:30  
**AS YOU LIKE** **THO** 1:30  
 Talkback-after As You **THO**  
 Preface-Merry **CARP** 5:30  
 Green Show **GSS** 6:45  
**CAESAR** **BMR** 8:00  
**QUIXOTE** **THO** 8:00  
**MERRY ALLEN** 8:00

## 21

**EARNEST** **BMR** 1:30  
**AS YOU LIKE** **THO** 1:30  
**SHANE** **BMR** 8:00  
**WOODS ALLEN** 8:00

## 23

**EARNEST** **BMR** 1:30  
**AS YOU LIKE** **THO** 1:30  
 Preface-Woods **CARP** 5:30  
 Green Show **GSS** 6:45  
**SHANE** **BMR** 8:00  
**WOODS ALLEN** 8:00

## 24

Preface-Caesar **CARP** 12:00  
**CAESAR** **BMR** 1:30  
**QUIXOTE** **THO** 1:30  
 Preface-Earnest **CARP** 5:30  
 Green Show **GSS** 6:45  
**EARNEST** **BMR** 8:00  
**MERRY ALLEN** 8:00

## 25

**SHANE** **BMR** 1:30  
**AS YOU LIKE** **THO** 1:30  
 Preface-Woods **CARP** 5:30  
 Green Show **GSS** 6:45  
**CAESAR** **BMR** 8:00  
**WOODS ALLEN** 8:00

## 26

Immersive Weekend III\*  
 Public Curtain Tour 9:30  
 Campus Tour 10:30  
**CAESAR** **BMR** 1:30  
**QUIXOTE** **THO** 1:30  
 Talkback-after Caesar **BMR**  
 Preface-Merry **CARP** 5:30  
 Green Show **GSS** 6:45  
**EARNEST** **BMR** 8:00  
**AS YOU LIKE** **THO** 8:00  
**MERRY ALLEN** 8:00

## 27

Immersive Weekend III\*  
 Campus Tour 10:30  
 Preface-Quixote **CARP** 12:00  
**EARNEST** **BMR** 1:30  
**QUIXOTE** **THO** 1:30  
 Talkback-after Quixote **THO**  
 Preface-Shane **CARP** 5:30  
 Green Show **GSS** 6:45  
**SHANE** **BMR** 8:00  
**QUIXOTE** **THO** 8:00  
**WOODS ALLEN** 8:00

## 24

**EARNEST** **BMR** 1:30  
**AS YOU LIKE** **THO** 1:30  
**SHANE** **BMR** 8:00

## 26

**AS YOU LIKE** **THO** 1:30  
 Preface-Woods **CARP** 5:30  
 Green Show **GSS** 6:45  
**SHANE** **BMR** 8:00  
**WOODS ALLEN** 8:00

## 27

Preface-Caesar **CARP** 12:00  
**CAESAR** **BMR** 1:30  
**QUIXOTE** **THO** 1:30  
 Preface-Merry **CARP** 5:30  
 Green Show **GSS** 6:45  
**EARNEST** **BMR** 8:00  
**MERRY ALLEN** 8:00

## 28

**SHANE** **BMR** 1:30  
**AS YOU LIKE** **THO** 1:30  
 Preface-Caesar **CARP** 5:30  
 Green Show **GSS** 6:45  
**CAESAR** **BMR** 8:00  
**WOODS ALLEN** 8:00

## 29

Public Curtain Tour 9:30  
 Campus Tour 10:30  
**SHANE** **BMR** 1:30  
**QUIXOTE** **THO** 1:30  
 Talkback-after Shane **BMR**  
 Preface-Merry **CARP** 5:30  
 Green Show **GSS** 6:45  
**EARNEST** **BMR** 8:00  
**AS YOU LIKE** **THO** 8:00  
**MERRY ALLEN** 8:00

## 30

Campus Tour 10:30  
 Preface-Quixote **CARP** 12:00  
**CAESAR** **BMR** 1:30  
**QUIXOTE** **THO** 1:30  
 Talkback-after Quixote **THO**  
 Preface-Shane **CARP** 5:30  
 Green Show **GSS** 6:45  
**SHANE** **BMR** 8:00  
**QUIXOTE** **THO** 8:00  
**WOODS ALLEN** 8:00

## 28

Immersive Weekend III\*  
**SHANE** **BMR** 1:30  
**AS YOU LIKE** **THO** 1:30  
**CAESAR** **BMR** 8:00  
**MERRY ALLEN** 8:00

## 30

**CAESAR** **BMR** 1:30  
**QUIXOTE** **THO** 1:30  
 Preface-Merry **CARP** 5:30  
 Green Show **GSS** 6:45  
**EARNEST** **BMR** 8:00  
**MERRY ALLEN** 8:00

\* Donors in the \$1,250+ categories are invited to join us for Immersive Weekend III on September 26–28. See page 19 for pricing on Member Event bonus activities (panel discussions, dinners, and more) and how to order.

## 31

**EARNEST** **BMR** 1:30  
**AS YOU LIKE** **THO** 1:30  
**CAESAR** **BMR** 8:00  
**MERRY ALLEN** 8:00

- **Preface:** See page 8.
- **Campus Tour:** See page 8.
- **Public "Curtain" (Behind the Curtain) Tour:** See page 8.
- **Talkback:** See page 8.
- **Green Show:** Concerts on the Bricks. Free. For monthly artist schedule, see [osfashland.org/greenshow](http://osfashland.org/greenshow).

KEY	
<b>BMR</b>	Angus Bowmer Theatre
<b>THO</b>	Thomas Theatre
<b>ALLEN</b>	Allen Elizabethan Theatre
<b>GSS</b>	Green Show Stage
<b>CARP</b>	Carpenter Hall

## VISIT THE OSF GIFT SHOP

No trip to OSF is complete without a stop in our friendly Gift Shop in its **new location** at the corner of Main and Pioneer!





# OCTOBER 2025

Get Your Member Discount! Members (Sustainer and above) get **25% off** for performances March 7–June 12 and Sept. 23–Oct. 26 **when you order during Presale**. After that, enjoy **10% off** if you order by March 6, 2025. (Tickets purchased or exchanged after March 6, 2025, will be full price.)

# FESTIVAL CAMPUS MAP

SUNDAY MONDAY TUESDAY WEDNESDAY THURSDAY FRIDAY SATURDAY

## OCTOBER 1

Preface-As You **CARP** 12:00  
**SHANE BMR** 1:30  
**AS YOU LIKE THO** 1:30  
 Preface-Caesar **CARP** 5:30  
 Green Show **GSS** 6:45  
**CAESAR BMR** 8:00  
**WOODS ALLEN** 8:00

## 2

**CAESAR BMR** 1:30  
**QUIXOTE THO** 1:30  
 Preface-Earnest **CARP** 5:30  
 Green Show **GSS** 6:45  
**EARNEST BMR** 8:00  
**MERRY ALLEN** 8:00

## 3

Public Curtain Tour 9:30  
 Campus Tour 10:30  
**CAESAR BMR** 1:30  
**QUIXOTE THO** 1:30  
 Talkback-after Caesar **BMR**  
 Preface-Woods **CARP** 5:30  
 Green Show **GSS** 6:45  
**SHANE BMR** 8:00  
**AS YOU LIKE THO** 8:00  
**WOODS ALLEN** 8:00

## 4

Campus Tour 10:30  
 Preface-Shane **CARP** 12:00  
**SHANE BMR** 1:30  
**AS YOU LIKE THO** 1:30  
 Talkback-after As You **THO**  
 Preface-Woods **CARP** 5:30  
 Green Show **GSS** 6:45  
**EARNEST BMR** 8:00  
**AS YOU LIKE THO** 8:00  
**MERRY ALLEN** 8:00

## 5

**EARNEST BMR** 1:30  
**QUIXOTE THO** 1:30  
**SHANE BMR** 8:00  
**WOODS ALLEN** 8:00

**N**

## 7

Preface-Shane **CARP** 5:30  
 Green Show **GSS** 6:45  
**SHANE BMR** 8:00  
**WOODS ALLEN** 8:00

## 8

Preface-Caesar **CARP** 12:00  
**CAESAR BMR** 1:30  
**QUIXOTE THO** 1:30  
 Preface-Earnest **CARP** 5:30  
 Green Show **GSS** 6:45  
**EARNEST BMR** 8:00  
**MERRY ALLEN** 8:00

## 9

**EARNEST BMR** 1:30  
**AS YOU LIKE THO** 1:30  
 Preface-Woods **CARP** 5:30  
 Green Show **GSS** 6:45  
**CAESAR BMR** 8:00  
**WOODS ALLEN** 8:00

## 10

Public Curtain Tour 9:30  
 Campus Tour 10:30  
**SHANE BMR** 1:30  
**AS YOU LIKE THO** 1:30  
 Talkback-after Shane **BMR**  
 Preface-Merry **CARP** 5:30  
 Green Show **GSS** 6:45  
**EARNEST BMR** 8:00  
**QUIXOTE THO** 8:00  
**MERRY ALLEN** 8:00

## 11

Campus Tour 10:30  
 Preface-Quixote **CARP** 12:00  
**CAESAR BMR** 1:30  
**QUIXOTE THO** 1:30  
 Talkback-after Quixote **THO**  
 Preface-Woods **CARP** 5:30  
 Green Show **GSS** 6:45  
**SHANE BMR** 8:00  
**WOODS ALLEN** 8:00

## 12

**EARNEST BMR** 1:30  
**AS YOU LIKE THO** 1:30  
**MERRY ALLEN** 8:00

**O**

## 14

**CAESAR BMR** 1:30  
 Preface-As You **CARP** 5:30  
**EARNEST BMR** 8:00  
**AS YOU LIKE THO** 8:00

## 15

Preface-Shane **CARP** 12:00  
**SHANE BMR** 1:30  
 Preface-Caesar **CARP** 5:30  
**CAESAR BMR** 8:00  
**QUIXOTE THO** 8:00

## 16

**EARNEST BMR** 1:30  
 Preface-As You **CARP** 5:30  
**SHANE BMR** 8:00  
**AS YOU LIKE THO** 8:00

## 17

Public Curtain Tour 9:30  
 Campus Tour 10:30  
**CAESAR BMR** 1:30  
**QUIXOTE THO** 1:30  
 Talkback-after Caesar **BMR**  
 Preface-Earnest **CARP** 5:30  
**EARNEST BMR** 8:00  
**AS YOU LIKE THO** 8:00

## 18

Campus Tour 10:30  
 Preface-Quixote **CARP** 12:00  
**SHANE BMR** 1:30  
**QUIXOTE THO** 1:30  
 Talkback-after Quixote **THO**  
 Preface-Caesar **CARP** 5:30  
**CAESAR BMR** 8:00  
**QUIXOTE THO** 8:00

## 19

**EARNEST BMR** 1:30  
**AS YOU LIKE THO** 1:30

**M**

## 21

**EARNEST BMR** 1:30  
 Preface-Quixote **CARP** 5:30  
**CAESAR BMR** 8:00  
**QUIXOTE THO** 8:00

## 22

Preface-Shane **CARP** 12:00  
**SHANE BMR** 1:30  
 Preface-As You **CARP** 5:30  
**EARNEST BMR** 8:00  
**AS YOU LIKE THO** 8:00

## 23

**CAESAR BMR** 1:30  
 Preface-Shane **CARP** 5:30  
**SHANE BMR** 8:00  
**QUIXOTE THO** 8:00

## 24

Public Curtain Tour 9:30  
 Campus Tour 10:30  
**EARNEST BMR** 1:30  
**AS YOU LIKE THO** 1:30  
 Talkback-after Earnest **BMR**  
 Preface-Caesar **CARP** 5:30  
**CAESAR BMR** 8:00  
**QUIXOTE THO** 8:00

## 25

Campus Tour 10:30  
 Preface-As You **CARP** 12:00  
**SHANE BMR** 1:30  
**AS YOU LIKE THO** 1:30  
 Preface-Earnest **CARP** 5:30  
**EARNEST BMR** 8:00

## 26

**CAESAR BMR** 1:30

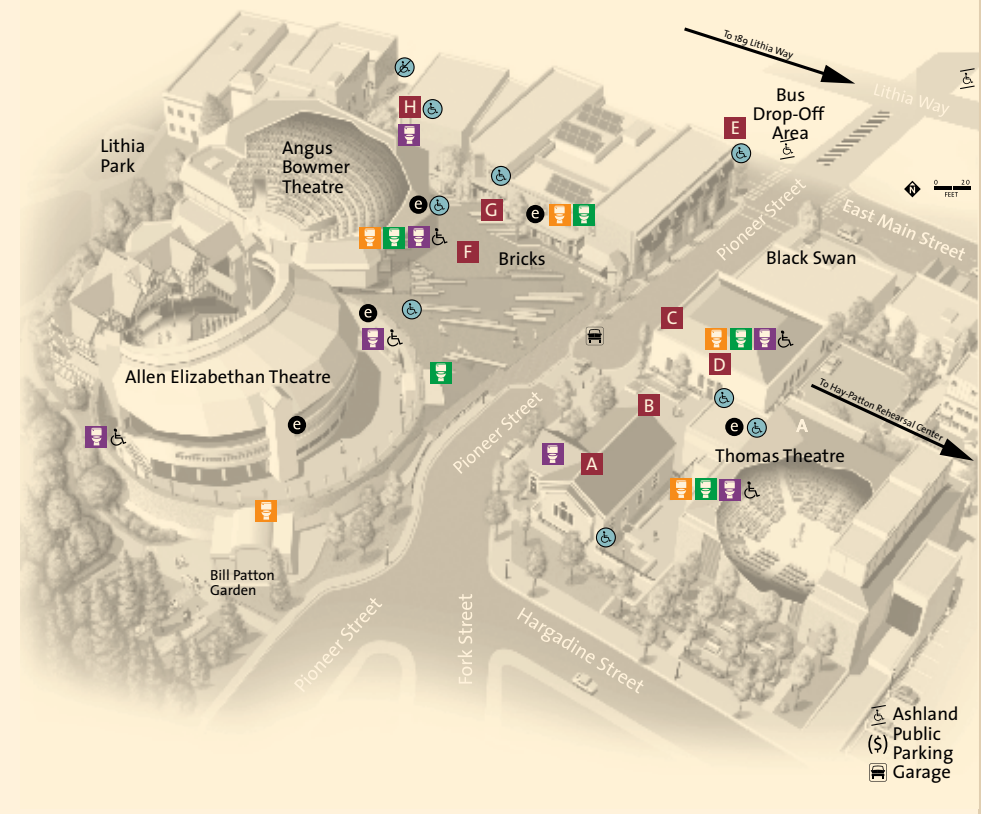
**S**

KEY	
<b>C</b>	closes
<b>BMR</b>	Angus Bowmer Theatre
<b>THO</b>	Thomas Theatre
<b>ALLEN</b>	Allen Elizabethan Theatre
<b>CARP</b>	Carpenter Hall

- **Preface:** See page 8.
- **Campus Tour:** See page 8.
- **Public "Curtain" (Behind the Curtain) Tour:** See page 8.
- **Talkback:** See page 8.
- **Green Show:** Concerts on the Bricks. Free. For monthly artist schedule, see [osfashland.org/greenshow](https://osfashland.org/greenshow).

## COLD? HERE'S A COOL IDEA.

On chilly nights in our outdoor Allen Elizabeth Theatre, rent a handmade pillow or fleece blanket to keep you warm and cozy throughout the show. Just visit the **Soroptimists' counter** (near the Access Booth in the concessions area) and know that your rental supports local education for women and girls.



### Oregon Shakespeare Festival Map

- A** Carpenter Hall
- B** Box Office
- C** Old Light Shop
- D** New Place
- E** Gift Shop
- F** Green Show Stage
- G** Administration Offices
- H** Gertrude Bowmer Members' Lounge / Camps Building
- Accessible Entrance
- Drop-Off Point
- Accessible Parking
- Elevators
- Bus Loading & Unloading
- Restrooms**
- Women
- Men
- All Gender
- Accessible

# ACCESSIBILITY

OSF is committed to offering **FREE** services that make our programs accessible to all visitors.

Mobility assistance, ADA seating, and accommodations for service animals are available for all performances. Closed Captioning and Audio Description are available on a limited basis for all performances except previews, with 2 weeks advance notice preferred. Please request these accommodations with your ticket purchase. As always, we will try to accommodate Access requests on shorter notice.

Assistive Listening Devices are available for all performances at the Access Booths in the lobbies on a first-come-first-served basis.

Our ASL+ Weekends in 2025 (June 20–22 and July 24–26) provide all accessibility services, with special emphasis on ASL-interpreted performances, in all three theatres. Please request seating in the ASL interpretation section by contacting Access Services via email at [accessforall@osfashland.org](mailto:accessforall@osfashland.org).

Please arrive early so that we may accommodate you.

## ACCESSIBILITY SERVICES

Visit [osfashland.org/access](https://osfashland.org/access) for updated information on:

- American Sign Language (ASL) Interpretation
- Audio Augmentation/ Assistive Listening Devices
- Closed Captions
- Audio Description
- Mobility Considerations

Email: [accessforall@osfashland.org](mailto:accessforall@osfashland.org)

Scan here or go to [osfashland.org/access](https://osfashland.org/access).





# 2025 MEMBER PRICES

## GET YOUR MEMBER DISCOUNT!

Members (Sustainer and above) get **25% off** for performances March 7–June 12 and Sept. 23–Oct. 26 when you order during Presale (Nov. 7–24, see dates on page 2). After that, enjoy **10% off** if you order by March 6, 2025. (Tickets purchased or exchanged after March 6, 2025, will be full price.)

### ANGUS BOWMER & ALLEN ELIZABETHAN THEATRES

(Julius Caesar, The Importance of Being Earnest, August Wilson's Jitney, Shane, The Merry Wives of Windsor, Into the Woods)

Seating Zone	Performances March 7–June 12 and September 23–October 26 25% Discount (if you order during Presale)			Performances March 7–June 12 and September 23–October 26 10% Discount (if you order/exchange Nov. 25–March 6)			All dates Full Price (if you order/exchange after March 6, 2025)		
	Previews	Tues & Sun Evenings	All Other Times	Previews	Tues & Sun Evenings	All Other Times	Previews	Tues & Sun Evenings	All Other Times
A+*	\$72.75	\$84.00	\$96.00	\$87.30	\$100.80	\$115.20	\$97.00	\$112.00	\$128.00
A	\$52.50	\$60.00	\$72.75	\$63.00	\$72.00	\$87.30	\$70.00	\$80.00	\$97.00
B	\$37.50	\$42.75	\$51.75	\$45.00	\$51.30	\$62.10	\$50.00	\$57.00	\$69.00
C	\$27.00	\$29.25	\$34.50	\$32.40	\$35.10	\$41.40	\$36.00	\$39.00	\$46.00

\* A+ seating in Elizabethan and Bowmer Theatres only

### THOMAS THEATRE

(Fat Ham, As You Like It, Quixote Nuevo)

Seating Zone	Performances March 7–June 12 and September 23–October 26 25% Discount (if you order during Presale)			Performances March 7–June 12 and September 23–October 26 10% Discount (if you order/exchange Nov. 25–March 6)			All dates Full Price (if you order/exchange after March 6, 2025)		
	Previews	Tues & Sun Evenings	All Other Times	Previews	Tues & Sun Evenings	All Other Times	Previews	Tues & Sun Evenings	All Other Times
A	\$56.25	\$66.75	\$78.75	\$67.50	\$80.10	\$94.50	\$75.00	\$89.00	\$105.00
B	\$39.75	\$44.25	\$54.00	\$47.70	\$53.10	\$64.80	\$53.00	\$59.00	\$72.00
C	\$27.00	\$29.25	\$34.50	\$32.40	\$35.10	\$41.40	\$36.00	\$39.00	\$46.00

All prices subject to change after Presale ends on November 25, 2024.

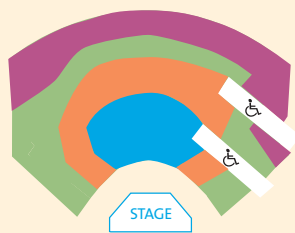
**1935ers Level Members** may purchase one \$35 ticket per show in zones B or C, all season, starting November 25.

## YOUTH PRICING

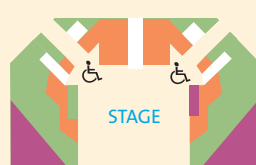
Attending with a young theatregoer? Audience members age 6–17 save 20% off full prices! Click “Youth” during seat selection or contact our Box Office. (Discount may not be combined with other offers or transferred to patrons 18 or older. Zone A+ excluded.)

## SEATING ZONES

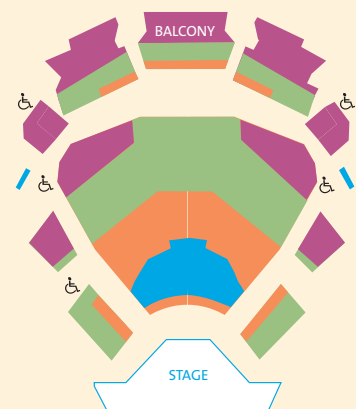
### ANGUS BOWMER THEATRE



### THOMAS THEATRE



### ALLEN ELIZABETHAN THEATRE



Wheelchair seating is offered in all theatres and is subject to availability. Seating zones subject to change.

Price Levels



osfashland.org

# OTHER EVENTS & POLICIES

## EDUCATION & ENGAGEMENT EVENTS — PRICING

See descriptions on page 8 and dates on calendar, pages 9–16.

**Prefaces:** \$12.00 per person

**Post-Show Talkbacks:** FREE with a ticket to that performance

**Campus Tours:** \$15.00 per person

**Behind the Curtain Summer Tours:** \$15.00 per person

**Unfolding Jitney (April 4–6):**

Class and play tickets, \$475; Class only, \$300

**Unfolding Julius Caesar (May 16–18):**

Class and play tickets, \$475; Class only, \$300

## MEMBER EVENTS BONUS ACTIVITIES — PRICING & ORDERING

To order: Choose the Member Event weekend you want to attend (see page 2). After October 31, go to [osfashland.org/MemberEvents](http://osfashland.org/MemberEvents) to see dates and times for bonus activities on each weekend. Then after your Presale period begins, order tickets for these special activities from the Member Events page anytime.

**Panel Discussions:** \$5 per person

**ADC Dinner:** ADC member attends free; bring one guest: \$100

**Southampton Legacy Lunch:** \$25 per person

**Chautauqua Guild Dinner:** \$85 per person

## POLICIES

- **Exchanges.** 2025 tickets may be exchanged up until the day before a performance, with a \$15 per ticket fee. If you have not chosen a date to exchange into, we will issue you an Exchange Voucher that may be redeemed for a performance up until October 31, 2025. Tickets may be donated up to the day of the performance. There are no refunds unless a performance is canceled by OSF, but we do offer the option of Season Ticket Insurance (see below). No refunds or exchanges on day-of-show, promotions, benefit events, or special offers.
- **Season Ticket Insurance.** Season Ticket Insurance (\$40) offers the options of a refund or an exchange without fees up until the day before the performance. Insurance is not retroactive and must be purchased when you buy your tickets. Season Ticket Insurance covers all ticket changes throughout the season. Ticket Insurance is not refundable and not applicable toward purchases for digital productions. **Note: If you are a donor at Sustainer level or above, Season Ticket Insurance is complimentary unless you have chosen to decline monetary benefits.**
- **1935ers level members** may purchase one \$35 ticket per show in zones B or C, all season, starting November 25.
- **Tickets Issued Digitally Only**, and will be scanned at the theatre door from your phone or printout with a no-contact scanner.
- **Children** under six are not admitted to plays or other events. To check suitability suggestions for each of the plays, call the Box Office or visit the OSF website.
- **Please Be on Time.** For late-arriving patrons, seating may not be possible except at intermission. Latecomers do not receive refunds. Please allow ample time to find parking in downtown Ashland.
- **Inclement Weather.** In the event of inclement weather in the outdoor Allen Elizabethan Theatre, the show will continue as long as it is safe for patrons, performers, and staff. If you choose to leave during the performance, there will be no refunds, exchanges, or vouchers offered.

## PLAY CONTENT & SUITABILITY

For more about the subject matter of any 2025 play, please view our Suitability Suggestions at [osfashland.org/suitability](http://osfashland.org/suitability) after mid-November 2024 or contact the Box Office for details.



# MEMBERSHIP BENEFITS

Thank you for your support! Your Membership enables us to produce world-class repertory theatre, arts education, and community access programs. For more information, go to [osfashland.org/membership](https://osfashland.org/membership).

## 1935ERS \$35–\$74.99 • Ticket sales start November 25

- For theatregoers age 19–35
- **1935er Exclusive:** One \$35 ticket to each production
- **1935er Exclusive:** 1935er Pre-Show Mixers
- Quarterly Newsletter
- Access to Gertrude Bowmer Members' Lounge
- 10% discount at the OSF Gift Shop

1935ERS

SUSTAINER

PATRON

BENEFACTOR

PRODUCER

PRODUCERS' CIRCLE

CHAUTAUQUA GUILD

CHAUTAUQUA GUILD CIRCLE

ARTISTIC DIRECTOR'S CIRCLE

## SUSTAINER \$75–\$199 • Presale November 21–24

- All benefits of above level, PLUS:
- 25% ticket discount for Spring & Fall if ordered during Presale (see pages 2 & 18)
  - 10% ticket discount for Spring & Fall if ordered Nov. 25, 2024–March 6, 2025
  - Complimentary Season Ticket Insurance—refund or exchange with no fees

## PATRON \$200–\$599 • Presale November 19–20

- All benefits of above level, PLUS:
- Access to members' wait list for sold-out shows
  - 2 complimentary tickets to Prefaces

## BENEFACTOR \$600–\$1,249 • Presale November 14–18

- All benefits of above level, PLUS:
- 2 complimentary tickets to Behind the Curtain Tour or Campus Tour
  - 2 additional tickets to Prefaces
  - Complimentary non-alcoholic beverages in Members' Lounge
  - Gift recognition on OSF website
  - Virtual Access to Premier Member Coffee Chats

## PRODUCER \$1,250–\$2,999 • Presale November 12–13

- All benefits of above level, PLUS:
- Invitation to Immersive Weekends
  - Invitation to Premier Member Coffee Chats
  - 2 Complimentary tickets to any show

## PRODUCERS' CIRCLE \$3,000–\$5,999 • Presale November 12–13

- All benefits of above level, PLUS:
- Individualized production experience
  - Exclusive Immersive events
  - 2 complimentary pillows & blankets in Allen Elizabethan Theatre
  - Recognition in Festival publications

## CHAUTAUQUA GUILD \$6,000–\$11,999 • Presale November 8–11

- All benefits of above level, PLUS:
- Group sponsorship of an OSF production
  - Access to dramaturgical info
  - Invitation to Spirit of Chautauqua Guild Weekend
  - Commemorative gift from sponsored play
  - 2 additional complimentary tickets to any performance

## CHAUTAUQUA GUILD CIRCLE \$12,000–\$24,999 • Presale November 8–11

- All benefits of above level, PLUS:
- Top billing in all Chautauqua Guild listings
  - Exclusive private luncheon with company members
  - Transcription of Meet & Greet with Creative Team from sponsored show

## ARTISTIC DIRECTOR'S CIRCLE \$25,000+ • Presale November 7

- All benefits of above level, PLUS:
- First opportunity to order tickets
  - Personal assistance in obtaining tickets
  - Artistic Director's Circle Dinner
  - Copy of script from sponsored show
  - Invitation to design presentation
  - Closing gift from sponsored show
  - 4 additional complimentary tickets to any performance

**Tax Information:** To comply with IRS regulations for OSF's nonprofit 501(c)(3) status, the value of Membership/donation benefits must be deducted from your receipt/acknowledgment. We estimate the following amounts to be non-tax deductible: 1935er: \$0, Sustainer \$40, Patron \$74, Benefactor \$128, Producer \$378, Producers' Circle \$442, Chautauqua Guild \$752, Chautauqua Guild Circle \$812, Artistic Director's Circle \$1,512. For details, contact [Development@osfashland.org](mailto:Development@osfashland.org).

OSF Memberships and associated benefits are designated to up to two account holders and are non-transferable. Benefits expire with Membership. Benefits and dates subject to change. There are no group benefits with Membership.